

Table of content

System Requirements.....	2
Software requirements	2
Hardware Requirements	2
Installing the B1 iPayment Server Component.....	3
Installation Requirements	3
Installation.....	3
Upgrading the Server Component to a new version	7
Uninstalling the Server Component	7

Server component installation guide



The following document describes the system requirements of the B1 iPayment Server Component and how to Install, upgrade or uninstall the component.

The server component is a required service that needs to be installed on the server.
The server component handles automation, notification and integration between iPayment and SAP.

System Requirements

Software requirements

- B1 iPayment addin
 - o Same version as the Server component
- Server
 - o Microsoft Vista, 7, 8, 10 or Windows Server 2008/2012
- MSSQL Server
 - o Microsoft SQL Server 2008, 2008 R2, 2012, 2014, 2016 or 2017
- Other
 - o DI-API (32 bit) [Server component always need 32-bit DI-API regardless of B1 Client installed]
 - o .Net Framework 4.5

The service need to have full access to the following directories (All need read, write, and modify).

- The Windows Temp-folder (%temp%)
- The folder where you have installed the server component

Hardware Requirements

Component	Requirement
Processor	Multi core Machine
Memory	8 GB or higher
Free Hard Disk	30 MB
Display	1024 x 768 with 24-bit colors or higher

Installing the B1 iPayment Server Component

Installation Requirements

Before starting the installation of the server component you should install and configuration iPayment in the company databases where the server component is to be used.

When setting up the server component you will be required to provide "sa" database credentials so please have these at hand.

Installation

The setup file required for installation ("Setup.exe") can be found in the zip you downloaded from boyum-it.com under folder "Server Component (32-bit)". The setup file should be moved to the server – to start the installation simply double click the setup file and follow the wizard.

When the installation is completed 2 new services has been installed on your system and you will be greeted by a wizard (You can access the configuration window later from Start > iPayment Server Component):

Setup v. 2017.0.2.0

Back

Setup

Please specify the database connection information

1. Server information:

Database server: RGA-DK-DESKTOP

Database type: MSSQL 2012

2. Log on credentials

Use the following User Name and Password

Database User Name: sa

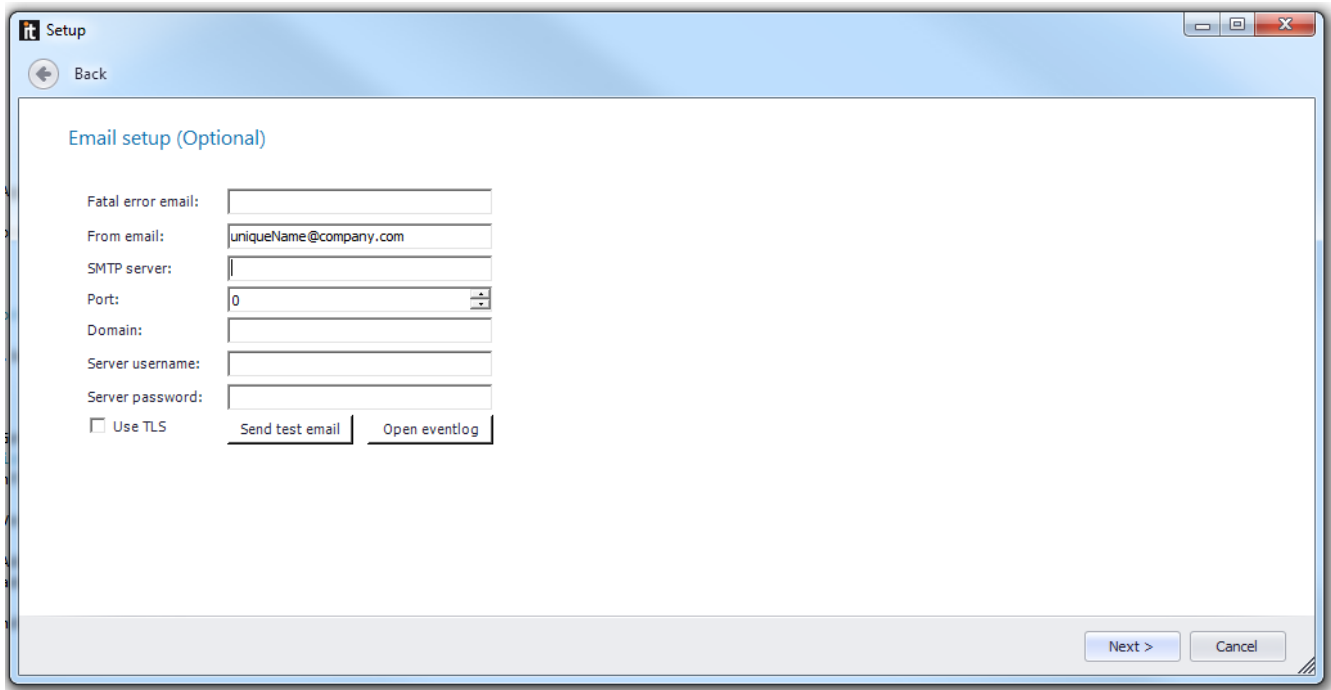
Database password:

Use Windows Authentication

Test connection

Next > Cancel

Please fill in the required information and press 'Next'.



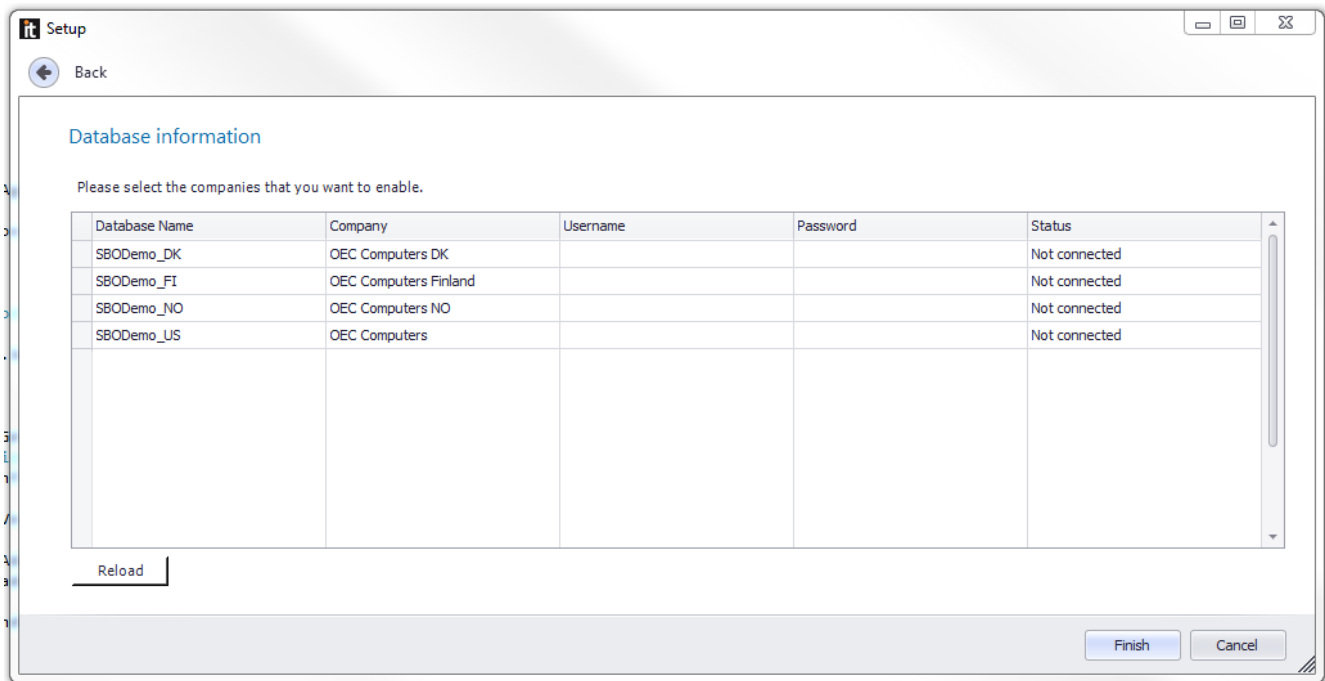
Please provide a "Fatal error email" this email will be used if the service encounters a core error.

PLEASE MAKE SURE YOU FILL OUT THE EMAIL SETTINGS CORRECTLY AS INCORRECT EMAIL SETTINGS WILL STOP THE SERVICE FROM RELAYING ERROR/SUCCESS EMAILS!

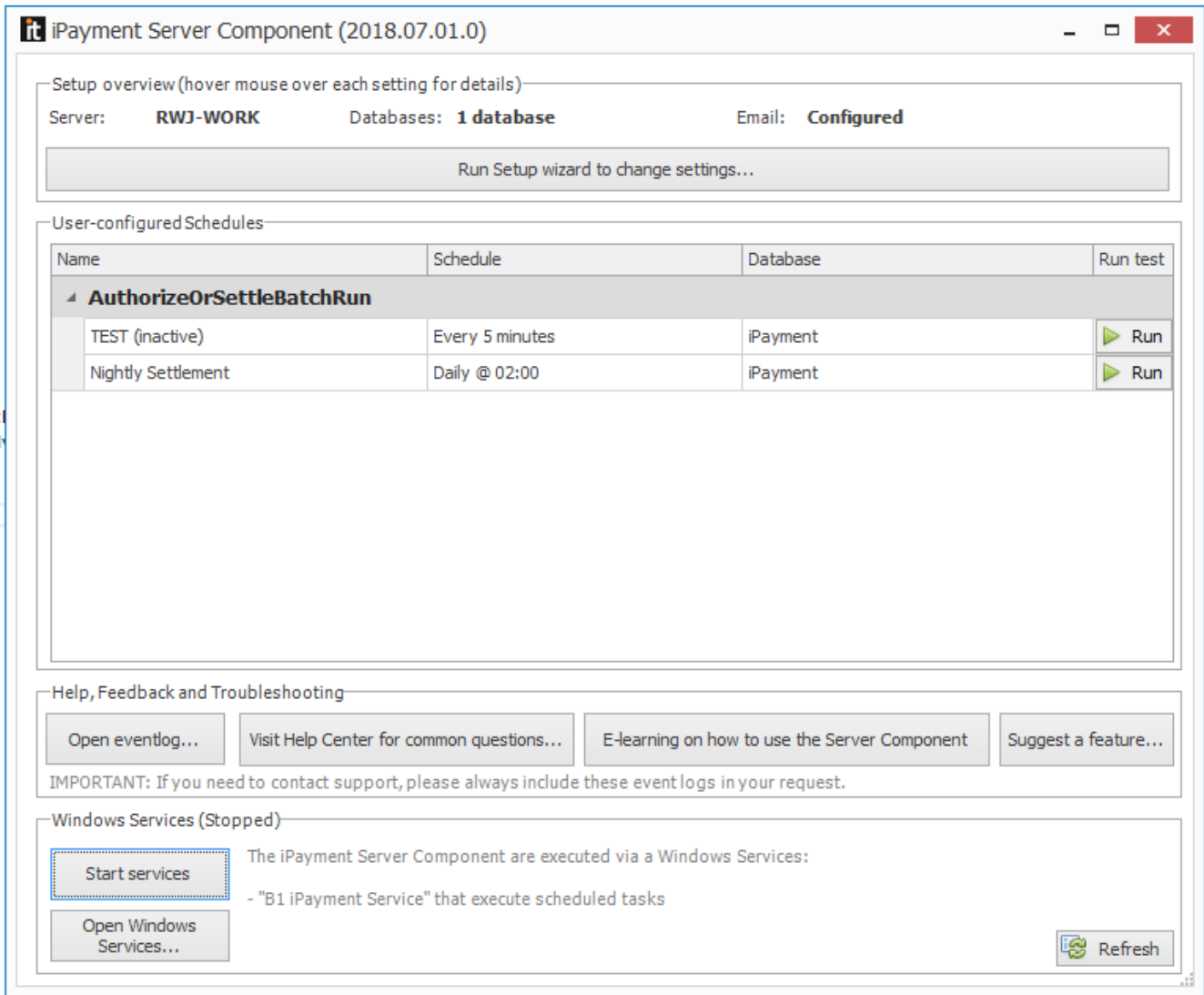
After providing the information press 'Next' to continue.

The next screen will show all SAP company databases found. To enable the databases for use with the server component please provide username and password for a user with access to update document, business partners and send internal message.

The 'OK' column will get marked in the provide information is correct.



The next window is the main window where you can administrate the service and re-configure the settings.



The start and stop service buttons can be used to control the services, the other buttons will access configuration windows, online help and options to suggest a feature.

In the middle you will see Schedule Actions (if you have defined any in the Add-on) and you have the option to test-run them from here.

Now the service is installed and ready to begin its work - you may start it using the "Start service" button.

Upgrading the Server Component to a new version

Upgrade of server component works in the same manner as installing the first time. You need to run the ServerComponent.exe and it will then upgrade the server component.

Note: If you get a hotfix version where the last version number is different from 0 (example 2016.02.1) you need to uninstall the server component and then install it again. It cannot automatically upgrade hotfix releases!

Uninstalling the Server Component

This is done via normal Add/Remove Programs in windows.